

Drip Specs

Landscape area: 1,664 sq. ft.
 Soil type: Assumed Clay loam
 Static pressure: Assumed higher than 50 psi

Drip emitter flow: 0.6 gph
 Drip emitter spacing: 12"
 Drip row spacing: 18"
 Drip application rate: 0.64 in/hr

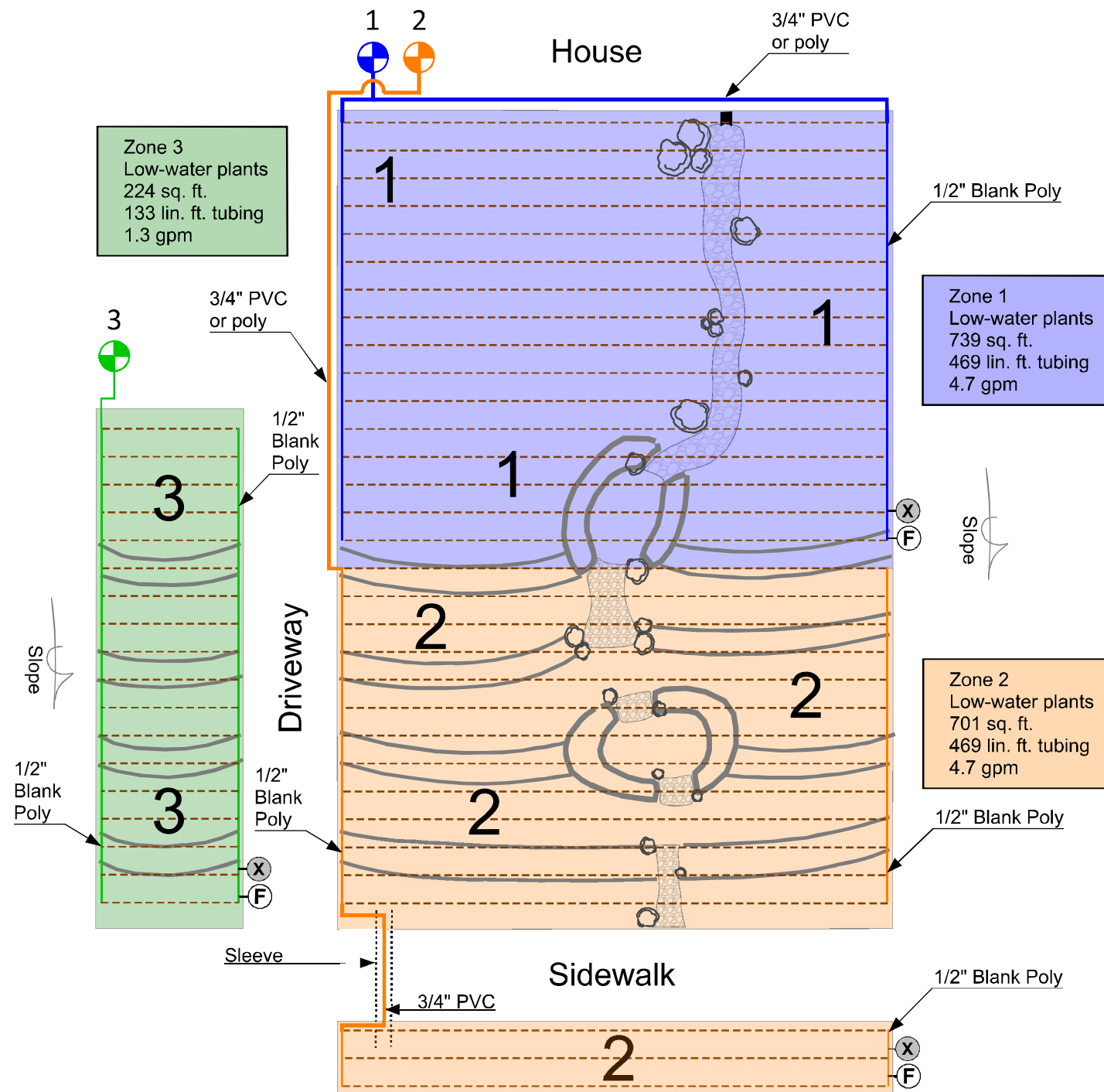
Assumptions

This irrigation plan assumes the following:

1. There is a slope on the property of at least a five-foot difference between the street level and the top of the landscape. The house is the high point.
2. The rectangular area to the left (zone 3) is on the far side of the driveway, and thus has its own dedicated irrigation valve.
3. The soil type has a high percentage of clay.
4. The static water pressure for the property is at least 50 psi. Static pressure is the reading with no water running.

Notes

1. This example irrigation plan was designed for a combined landscape area of 1,664 square feet. When applied to different sizes and shapes of landscapes, more or fewer valves could be needed.
2. Zones 1 and 2 have 3/4" PVC or poly tubing running from the valve to the grids. This is to support the 4.7 gpm flow of the zones.
3. Run drip tubing around and not under boulders.
4. See details sheet for more example grid layouts.
5. It's highly recommended to use dripline with check valves. These hold the water in the tubing when the water drip zone is finished watering. Most dripline products on the market will hold back water to at least 4.5 feet of elevation.
6. Anti-syphon valves must be installed 6 to 12 inches higher in elevation than the highest point they water.
7. Do not combine sprinklers and drip in the same irrigation zone.



Irrigation Key

- Irrigation Valve
- PVC Lateral
- In-line Drip Tubing
- Blank Drip Tubing
- Drip Manual Line-Flushing Valve
- Drip Operation Indicator

Lori Palmquist
 CID, CIC, CLIA, CLWM
 Irrigation Design & Consulting
 support@loripalmquist.com
 510-374-6360



SHEET DESCRIPTION:
 Lose the Lawn, Use the Rain
 Color Irrigation Plan

PROJECT:
 Water Smart Landscapes in Sacramento
 CALIFORNIA AMERICAN WATER

REVISIONS:
 N/A

DATE:
 2021 / 2022

JOB NUMBER:
 Theme #1

DRAWN BY:
 LP

CHECKED BY:
 CB

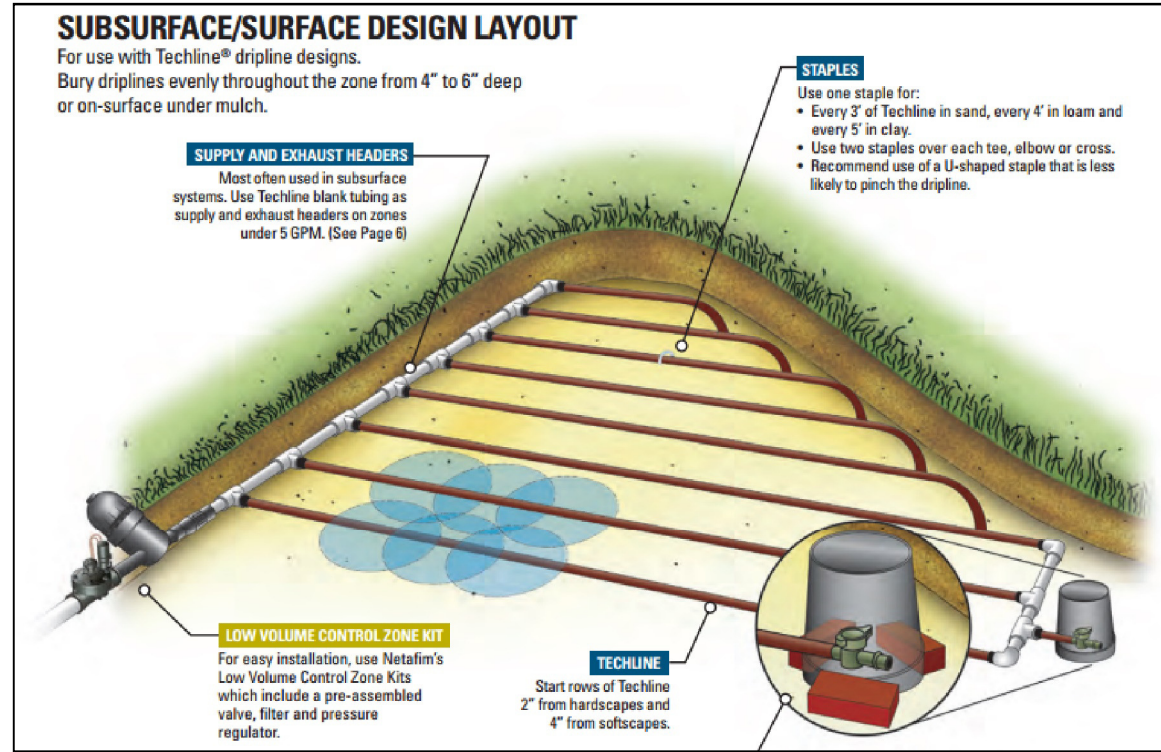
SCALE:
 1" = 8'

SHEET:
 3

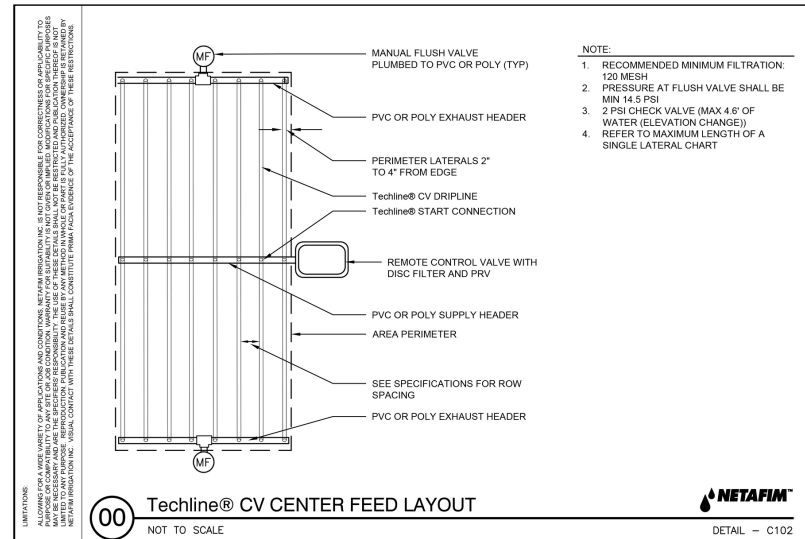


Lose the Lawn, Use the Rain

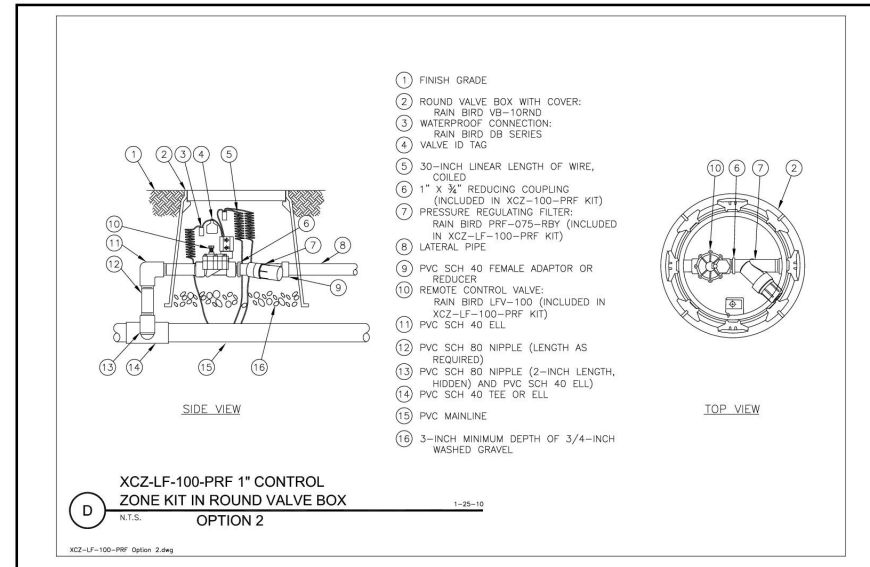
Design Layout



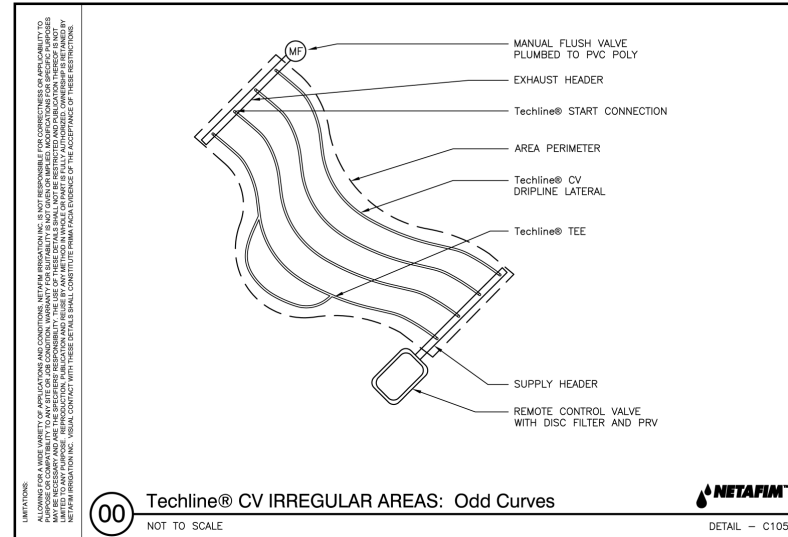
Drip Grid Center Feed



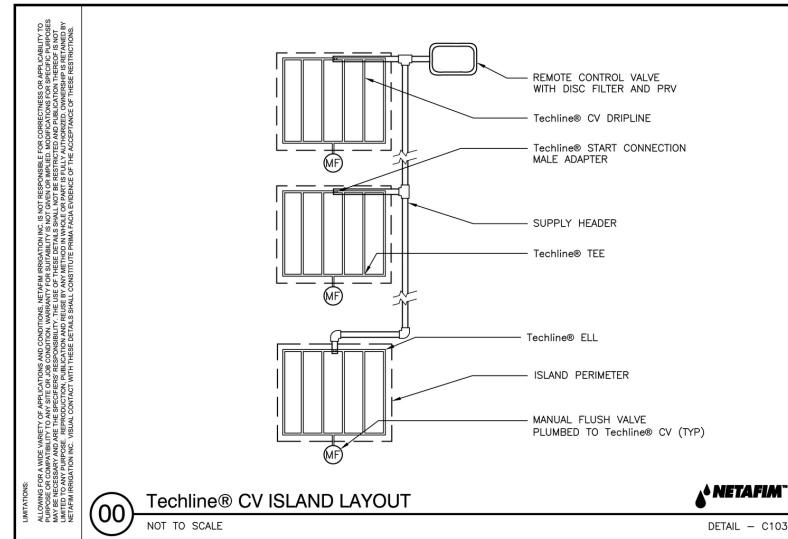
Globe Valve Drip Control Zone Kit



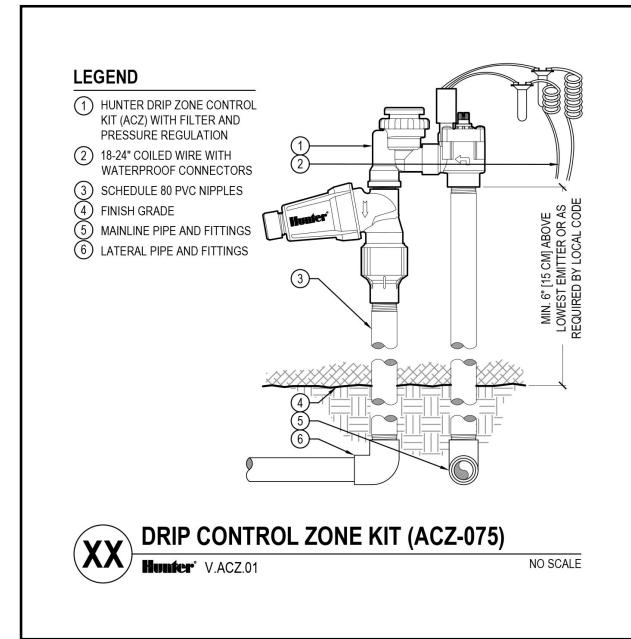
Drip Grid Irregular Areas



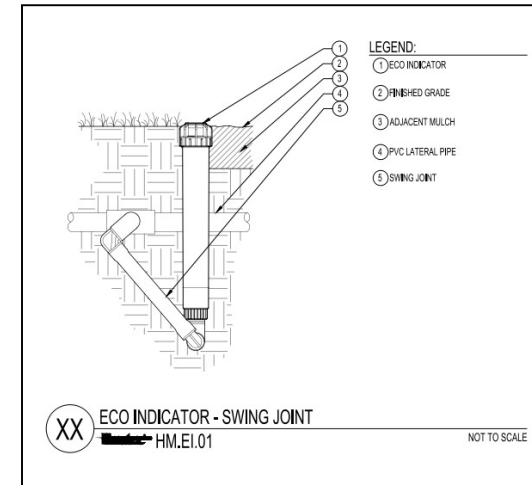
Drip Grid Islands



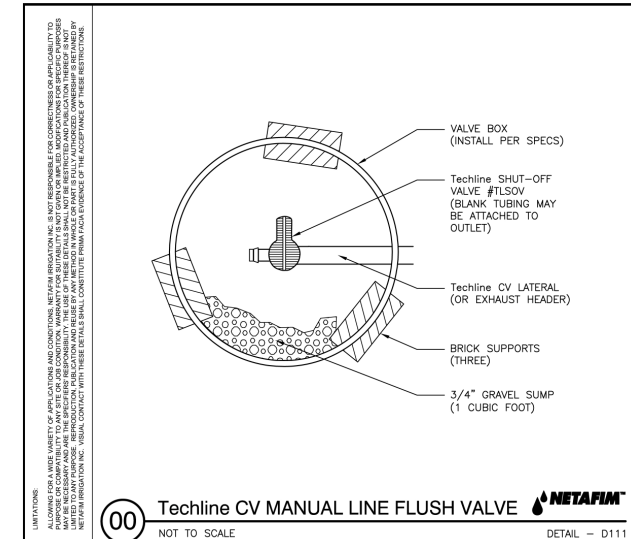
Anti-Syphon Drip Control Zone Kit



Drip Pop-Up Indicators



Drip Shut-Off Valves



Lori Palmquist
CID, CIC, CLIA, CLWM
Irrigation Design & Consulting
support@loripalmquist.com
510-374-6360



SHEET DESCRIPTION:
Lose the Lawn, Use the Rain
Drip Details

PROJECT:
Water Smart Landscapes in Sacramento



REVISIONS:
None

DATE:
2021 / 2022

JOB NUMBER:
1

DRAWN BY:
LP

CHECKED BY:
CB

SCALE:
No scale

SHEET:
4